

# KSL-HS

High-speed continuous-flow grinding machine with peripheral disks

# LiSEC

CREATING VISIONS. PROVIDING SOLUTIONS.



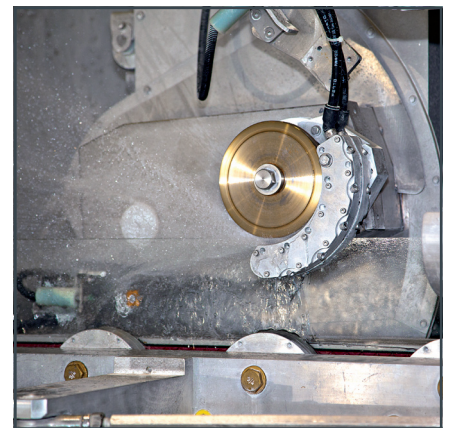
The top and bottom edge are grinded with peripheral tools in two consecutive machines linked by a disk rotating unit (SWR). The system achieves an extremely high output. The contact-free disk guidance system rules out not only any contamination of the front side but at the same time also acts as a vibration absorber that further enhances quality. Moreover, the constant stream of water completely prevents disruptive micro deposits of abrasion debris.

### Highlights

- Extremely low cycle times (up to 6 sec.)
- Vertical processing prevents grinding residue from collecting on the glass
- Patented vibration absorption system for high edge quality
- Contaminations of the front side are ruled out
- Self-adjusting, automatic grinding disk sharpening

### Optional

- Online glass edge quality control (image processing) including automatic correction of the wear on tools
- Belt grinder can be integrated as an option



Upmost quality of C grinding within extremely short cycle times

Technical Data	KSL-17HS	KSL-22HS	KSL-27HS	KSL-33HS
Glass thickness	2-6 mm optional 2-8 mm			
Minimal size	540mm x 540mm			
Maximal size	...mm x 1700mm	...mm x 2200mm	...mm x 2700mm	...mm x 3300mm
Transport height	720mm			
Inclination angle for glass transport	6°			